

25 E Battery Street

Charleston, SC 29401

MLS #22029877

\$7,100,000

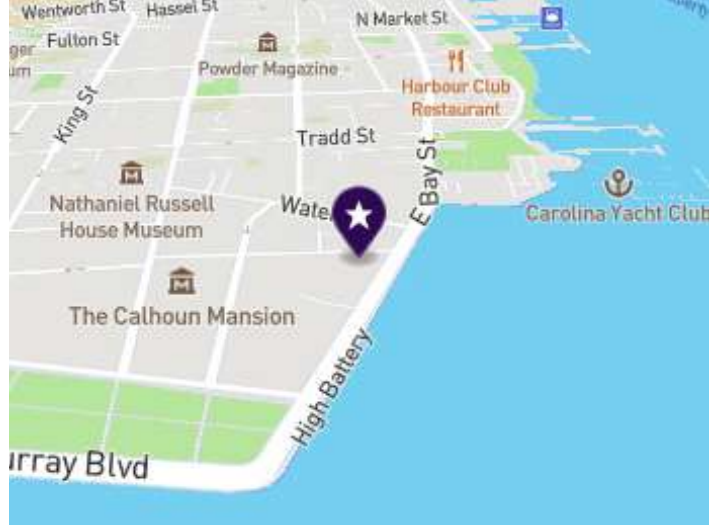
CLOSED 12/1/22

6 Beds 5.00 Baths

8,782 Sq. Ft. (\$808 / sqft)

Year Built 1885

Days on market: 1



Details

Prop Type: Single Family Detached

County: Charleston

Area: 51 - Peninsula Charleston Inside of Crosstown

Subdivision: South of Broad

Style: Carriage/Kitchen House, Charleston Single, Victorian

Full baths: 5.0

Half baths: 1.0

Acres: 0.31

Lot Size (sqft): 13,503

List date: 12/2/22

Off-market date: 12/1/22

Updated: Dec 2, 2022 10:34 AM

List Price: \$7,100,000

Orig list price: \$7,100,000

High: Burke

Middle: Simmons Pinckney

Elementary: Memminger

Features

Appliances: Dishwasher, Dryer, Refrigerator, Washer

Accessibility Features: Handicapped Equipped

Community Features: Elevators, Security, Trash

Construction Materials: Block/Masonry, Brick, Stucco

Cooling: Central Air

Exterior Features: Balcony, Elevator Shaft, Lawn Irrigation, Lighting

Fencing: Wrought Iron

Fireplace Features: Three +

Flooring: Marble, Wood

Foundation Details: Basement

Heating: Forced Air

Interior Features: Ceiling - Smooth, High Ceilings, Elevator, Walk-In Closet(s), Family, Formal Living, Entrance Foyer, Office, Pantry, Separate Dining, Study, Sun

Laundry Features: Laundry Room

Levels: 3 Stories

Parking Features: Off Street

Property Condition: Pre-Owned

Roof: Asphalt

Security Features: Security System

Sewer: Public Sewer

Utilities: Charleston Water Service, Dominion Energy

Waterfront Features: River Front

Water Source: Public



Bryan McElveen

Dunes Properties of Charleston

Cell: 843.276.0352

bmcelveen@dunesproperties.com | www.charlestonlivability.com

Remarks

FOR COMP PURPOSES ONLY

Courtesy of Carriage Properties LLC
Information is deemed reliable but not guaranteed.



Bryan McElveen

Dunes Properties of Charleston

Cell: 843.276.0352

bmcelveen@dunesproperties.com | www.charlestonlivability.com

25 E Battery Street Charleston, SC 29401

MLS #22029877

\$7,100,000

CLOSED 12/1/22

6 Beds 5.00 Baths
Year Built 1885

8,782 Sq. Ft. (\$808 / sqft)
Days on market: 1

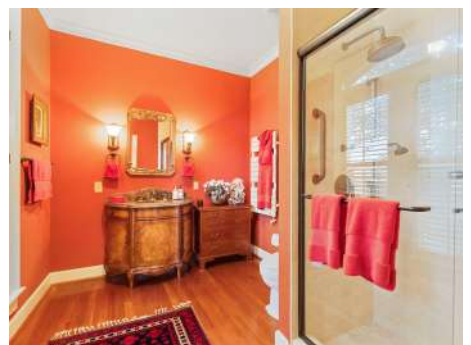


Bryan McElveen

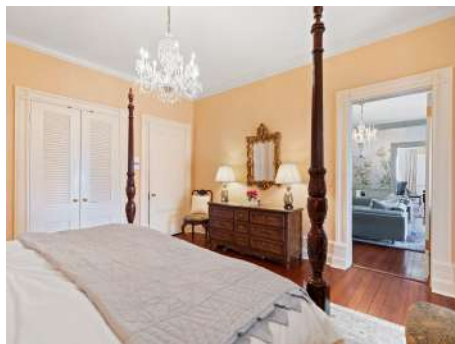
Dunes Properties of Charleston

Cell: 843.276.0352

bmcelveen@dunesproperties.com | www.charlestonlivability.com



Bryan McElveen
Dunes Properties of Charleston
Cell: 843.276.0352
bmcelveen@dunesproperties.com | www.charlestonlivability.com



Bryan McElveen
Dunes Properties of Charleston
Cell: 843.276.0352
bmcelveen@dunesproperties.com | www.charlestonlivability.com



Bryan McElveen
Dunes Properties of Charleston
Cell: 843.276.0352
bmcelveen@dunesproperties.com | www.charlestonlivability.com



Bryan McElveen
Dunes Properties of Charleston
Cell: 843.276.0352
bmcelveen@dunesproperties.com | www.charlestonlivability.com



Bryan McElveen
Dunes Properties of Charleston
Cell: 843.276.0352
bmcelveen@dunesproperties.com | www.charlestonlivability.com

Property Report



First Floor West House



Second Floor Guest House



Garden House



Bryan McElveen
 Dunes Properties of Charleston
 Cell: 843.276.0352
 bmcelveen@dunesproperties.com | www.charlestonlivability.com

Property Report



Bryan McElveen
Dunes Properties of Charleston
Cell: 843.276.0352
bmcelveen@dunesproperties.com | www.charlestonlivability.com