

47 E Bay Street Charleston, SC 29401

MLS #22028878

\$8,600,000

CLOSED 2/28/23

5 Beds 5.00 Baths

7,075 Sq. Ft. (\$1,216 / sqft)

Year Built 1740

Days on market: 0



Details

Prop Type: Single Family Detached

Style: Charleston Single

Off-market date: 2/28/23

High: Burke

County: Charleston

Full baths: 5.0

Updated: Feb 28, 2023 2:34 PM

Middle: Simmons Pinckney

Area: 51 - Peninsula Charleston Inside of Crosstown

Half baths: 2.0

List Price: \$8,600,000

Elementary: Memminger

Subdivision: South of Broad

Acres: 0.26
Lot Size (sqft): 11,325

List date: 11/15/22

Sold date: 2/28/23

Orig list price: \$8,600,000

Taxes: \$27,137

Features

Appliances: Dishwasher, Dryer, Refrigerator, Washer, Tankless Water Heater

Fireplace Features: Bedroom, Dining Room, Gas Log, Living Room, Three +

Interior Features: Ceiling - Smooth, Elevator, Kitchen Island, Walk-In Closet(s), Wet Bar, Formal Living, Entrance Foyer, Separate Dining, Sun

Property Condition: Pre-Owned

Construction Materials: Brick, Stucco

Flooring: Ceramic Tile, Wood

Laundry Features: Laundry Room

Roof: Metal, Slate

Cooling: Other

Foundation Details: Basement, Crawl Space

Levels: Multi-Story

Security Features: Security System

Exterior Features: Lawn Irrigation, Lighting

Heating: Forced Air

Parking Features: Off Street

Sewer: Public Sewer

Utilities: Charleston Water Service, Dominion Energy

Water Source: Public

Pool Features: In Ground



Bryan McElveen

Dunes Properties of Charleston

Cell: 843.276.0352

bmcelveen@dunesproperties.com | www.charlestonlivability.com

Window Features:
Window Treatments

Remarks

One of the finest homes in historic downtown Charleston, the Anne Boone House is a breathtaking jewel, masterfully renovated by an elite team of Charleston experts. This pre-Revolutionary property encompasses an expansive .26-acre and more than 7,000 square feet. Historically, the home may have been built after the fire of 1740 within the brick shell of an early 18th century house. The north wall of the home features stucco and arched staircase windows survived from its original construction. Today, timeless elegance is seamlessly blended with modern luxury living at 47 East Bay. Renowned landscape architect, Glen Gardner, created a masterpiece with the grounds of this home, truly making you feel a world away from the bustle of downtown living. A lush garden, heated pool and multiple seating areas are just a few of the outdoor highlights to enjoy. The pool house conveniently hosts a bar, bathroom and shower and the yard is complete with irrigation, landscape lighting and turf. From top to bottom, no detail has been overlooked.

Inside, the striking foyer features custom painted floors and Venetian plaster walls by artist Stephanie Poe. A spacious formal living room boasts an abundance of natural light and cypress wood paneling. There are six fireplaces throughout the home that can be used as gas or wood-burning. Intricate details like the ceiling medallions inspired by Drayton Hall remind you of this home's incredible history. Its formal dining room is ideal for entertaining with a butler's pantry equipped with two wine refrigerators. The informal dining room is a showpiece with floor-to-ceiling Dynamic Fenestration windows and doors. A chef's kitchen features white oak floors, Calacatta Blue Marble countertops, Dornbracht fittings and top-of-the-line appliances. The cozy sitting room off the kitchen showcases steel framed doors overlooking the pool and gardens, easily creating an indoor to outdoor living space.

The second-floor landing is outfitted with Mosharabi panels handmade in Morocco, petrified wood tile by Ann Sacks and a beverage refrigerator and sink. The library maintains original floors and paneling with impressive custom bookshelves. Outside, the piazza is a tranquil place to take in the Charleston Harbor breezes. A delightful sunroom can be accessed by the piazza or the spacious primary suite. The primary bedroom suite features two fireplaces and dual closets. The bathroom is outfitted with radiant flooring, a steam shower, dual water closets, oak paneling and Bob Hines mirrorwork. Expertly designed en suite bedrooms span the third floor and a laundry room can also be found on this level.

Guests will enjoy the private, fourth floor bedrooms with original ceiling beams, a beverage refrigerator and coffee bar. This space offers a full bath, an abundance of storage and a charming rooftop deck for even more outdoor space. Additional features include ample off-street parking and a three-floor elevator. The HVAC, electrical and plumbing have also been re-done in the entire home. From the impressive grounds, the standout renovation and the incredible design - this truly is a rare opportunity to own a piece of South of Broad history.



Bryan McElveen

Dunes Properties of Charleston

Cell: 843.276.0352

bmcelveen@dunesproperties.com | www.charlestonlivability.com

Courtesy of William Means Real Estate, LLC
Information is deemed reliable but not guaranteed.



Bryan McElveen
Dunes Properties of Charleston
Cell: 843.276.0352
bmcelveen@dunesproperties.com | www.charlestonlivability.com

47 E Bay Street Charleston, SC 29401

MLS #22028878

\$8,600,000

CLOSED 2/28/23

5 Beds 5.00 Baths

Year Built 1740

7,075 Sq. Ft. (\$1,216 / sqft)

Days on market: 0



Bryan McElveen

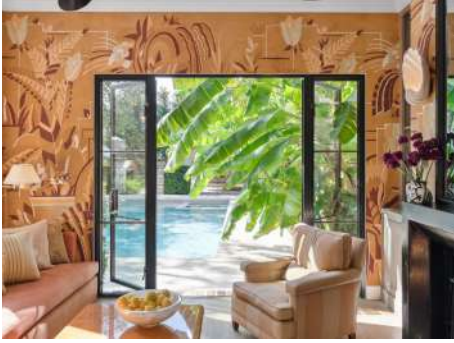
Dunes Properties of Charleston

Cell: 843.276.0352

bmcelveen@dunesproperties.com | www.charlestonlivability.com



Bryan McElveen
Dunes Properties of Charleston
Cell: 843.276.0352
bmcelveen@dunesproperties.com | www.charlestonlivability.com



Bryan McElveen
Dunes Properties of Charleston
Cell: 843.276.0352
bmcelveen@dunesproperties.com | www.charlestonlivability.com



Bryan McElveen
Dunes Properties of Charleston
Cell: 843.276.0352
bmcelveen@dunesproperties.com | www.charlestonlivability.com



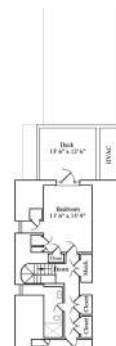
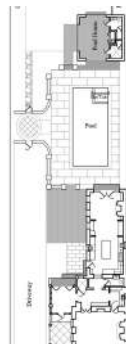
Bryan McElveen
Dunes Properties of Charleston
Cell: 843.276.0352
bmcelveen@dunesproperties.com | www.charlestonlivability.com



Bryan McElveen
Dunes Properties of Charleston
Cell: 843.276.0352
bmcelveen@dunesproperties.com | www.charlestonlivability.com



Bryan McElveen
Dunes Properties of Charleston
Cell: 843.276.0352
bmcelveen@dunesproperties.com | www.charlestonlivability.com



Bryan McElveen
Dunes Properties of Charleston
Cell: 843.276.0352
bmcelveen@dunesproperties.com | www.charlestonlivability.com

Property Report

RESTORATION

- Richard Marks Restorations, Inc.
- Glenn Kayan Architects
- Glenn Gardner Landscape Architects
- Carew Donnelly Ltd. Co.

PUBLICATIONS

- Woods Magazine - April 2021
- At Home In The South - October 2022
- The Alliance of Restoration: Houses, Rooms and Gardens by Susan Sully

HOME HIGHLIGHTS

- All existing fireplaces have been refired and can be gas or wood burning
- HVAC, electrical and plumbing re-done in the whole house
- See notes HVAC, Geothermal except 1-2 zones
- Ronol water heaters
- Sound system throughout first and second floors including pool and pool house
- Wi-Fi recently updated
- Elevator services three floors with safety shut off gate sensor
- The Nest Company hardware throughout
- Designer finishes throughout
- Ceiling medallions in the living room and dining room are inspired by Dogtrot Hall

OWNER

DINING ROOM

- Cypress paneling with glass stria walls
- Arabescato marble fireplace surround

BUTLER'S PANTRY

- Brass and bronze countertop, backplash and fittings
- Two wine refrigerators

POWDER ROOM

- Black Imperial stone by Artistic Tile
- Bob Hiss mirror work
- Waterworks fixtures
- Urban Electric Co. lighting

INFORMAL DINING ROOM

- Wood framed Dynamic Fenestration windows and doors
- Lantern by Vaughan Designs

KITCHEN

- Calaatta Blue Marble countertops
- Sub-Zero refrigerator
- Wolf range
- Male dishwashers
- Donracchi fittings
- White oak floors

SITTING ROOM

LIBRARY

- Original floors and paneling
- Custom bookshelves
- Arabescato marble fireplace surround

SECOND FLOOR LANDING

- Washable panels hand-made in Tennessee
- Beverage refrigerator and sink
- Petrified wood tile by Ann Sacks

PIAZZA

- Lantern by Vaughan Designs

PRIMARY BEDROOM

- Arabescato marble fireplace surround

PRIMARY BATHROOM

- Vanilla onyx vanity
- Limestone and porcelain tile by Ann Sacks
- Kalata fittings
- Radiant heating
- Steam shower
- Bob Hiss mirror work

DRESSING ROOM

- Dynamic Fenestration steel doors
- Arabescato marble fireplace surround
- Stacked washer and dryer

SUNROOM

- Wood framed Dynamic Fenestration windows and doors
- Pull-down screens

THIRD FLOOR

- Two bedrooms with on suite baths
- Bathroom fittings and fixtures by Waterworks, Urban Electric Co. and Ann Sacks

FOURTH FLOOR

- Original ceiling beams
- Guest bedroom with a beverage refrigerator, coffee bar and charming rooftop deck
- Full bathroom with marble shower and Kalata fittings

POOL HOUSE

- Outdoor bar with refrigerator, ice maker and sink
- Wolf grill
- Cypress paneling
- Full bathroom with split shower and powder room

EXTERIOR FEATURES

- Irrigation
- Landscape lighting
- Turf
- Heated pool with cover
- Off-street parking for multiple cars



Bryan McElveen

Dunes Properties of Charleston

Cell: 843.276.0352

bmcelveen@dunesproperties.com | www.charlestonlivability.com